

# Chippewa Luce Mackinac Community Action

## Early Childhood Programs

Annual Report FY 2022

Supporting children and their families  
in realizing their potential by providing  
quality programs in partnership with  
our communities since 1965.

Head Start is a federally funded program that provides education, health/mental health, disability, nutrition, and family support services to engage families and ensure children enter school ready to learn and succeed.

**Education:** Head Start parents and teachers work together to ensure each child receives individualized, educational instruction according to their strengths and needs. Educational services are designed to ensure all children grow physically, socially, intellectually, and emotionally.

**Health, Dental, and Mental Health:** Comprehensive health care services are coordinated for every child to identify and address health, mental health, and dental problems early so that they do not interfere with a child's learning and development.

**Disability Services:** The program coordinates with the Local Education Agencies (LEA) and other groups to provide high quality services that benefit children with disabilities and their families.

**Nutrition:** Head Start assists families in meeting each child's nutritional needs while promoting the development of good eating habits and a healthy lifestyle.

**Family Engagement Services:** The program uses a family centered approach to support services with parents as partners and to integrate the parent, family, and community engagement (PFCE) efforts. Family and community support services are designed to assist the family in developing skills necessary to identify their own strengths and goals and effectively utilize community resources to help achieve those goals.



This report was prepared in compliance with the Head Start Reauthorization Act of 2007, Administrative Requirements and Standards Sec. 644 [42 U.S.C 9839 (2)].

These materials were funded in part by a grant from the Michigan Department of Education



### Center Locations 2021-2022

Algonquin

Brimley

Cedarville

Drummond Island

Kinross

Newberry

St. Ignace

Sault Sainte Marie

# Budget

**Head Start Program / T & TA : 2,883,897/ 29,710**

**Early Head Start Program/ T & TA: 1,080,177/ 22,636**

**Non Federal Share: 1,007,735**

**Great Start Readiness Program State Aid/Transportation :**

**400,045/16,600**

**Child and Adult Care Food Program (CACFP): 96,906**

**Funded Enrollment FY 2022**

212 Head Start Program

88 Early Head Start

110 Great Start Readiness Program

## Grantee Expenditures Head Start/EHS/CACFP Fiscal Year 2022

Personnel	2,400,152
Fringe Benefits	783,965
Travel	8,732
Equipment	-0-
Supplies and Food	355,762
Contractual	27,233
Training	52,346
Other	295,384
<b>Total</b>	<b>3,923,554</b>

## Grantee Proposed Budget Head Start/EHS/ CACFP

**Fiscal Year 2023**

Personnel	2,571,545
Fringe Benefits	932,480
Travel	-0-
Equipment	-0-
Supplies and Food	98,560
Contractual	14,485
Training	52,346
Other	347,004
<b>Total</b>	<b>4,016,420</b>

Most Recent Completed Financial Audit -2022 No Findings

Office of Head Start Aligned Monitoring System:

In June of 2021 the Office of Head Start completed a Focus Area One Review. The Program was found to be in full compliance with all Head Start Program Performance Standards.



## Grantee Budget Head Start/EHS

**CARES Fiscal Year 2022**

Personnel	93,000
Fringe Benefits	22,685
Travel	195
Equipment	-0-
Supplies and Food	30,073
Contractual	9,246
Other	28,411
<b>Total</b>	<b>183,610</b>



## Average monthly enrollment

Early Head Start Average Monthly Enrollment (September 2021- August 2022) = 100%

Head Start Average Monthly Enrollment (September 2020- June 2021= 88%

95% of eligible Head Start children were served and 109% of eligible Early Head Start children were served



## Healthy Children are Ready to Learn

With help from CLM CAA Early Childhood Programs, by the end of the program year,

100% of children had a medical home

100% of children had health insurance

96% of children were up to date on immunizations

85% of children had a dental home

89% of children were up to date on preventative health care

## 2021-2022 Head Start Disabilities

### 21 total IEP's

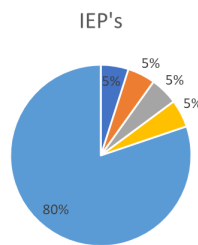
1-autism

1-intellectual disability

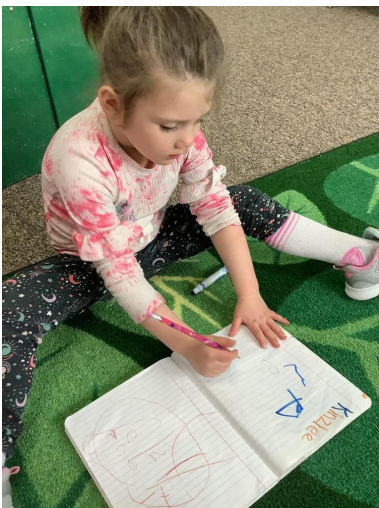
1-developmental delay

1-specific learning disability

16- speech and language impairments.



- Autism
- Intellectual disability
- Developmental delay
- Specific learning disability
- Speech/language impairment



## 2021-2022 Early Head Start Disabilities

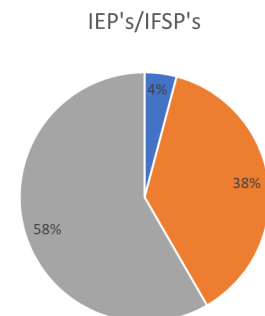
### 8 total IEP's

### 10 total IFSP's

1-health impairment

3-non categorical developmental delays

14-speech/language impairments.



- Health impairment
- Developmental delay
- Speech/language



## Assessing Program Quality

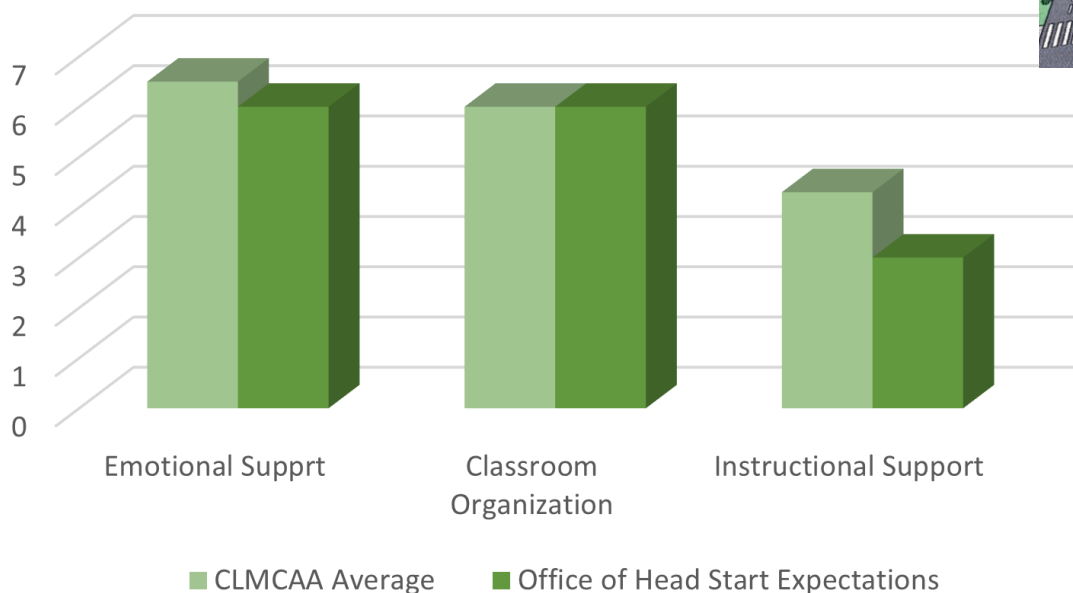
The Classroom Assessment Scoring System (CLASS®) is an observation instrument that assesses the quality of teacher-child interactions in center-based preschool classrooms. CLASS® includes three domains or categories of teacher-child interactions that support children's learning and development: Emotional Support, Classroom Organization, and Instructional Support. Within each domain are dimensions which capture more specific details about teachers' interactions with children. CLASS® is scored by trained and certified observers using a specific protocol. Following their observations of teacher-child interactions, CLASS® observers rate each dimension on a 7-point scale, from low to high. Negative Climate is the only area scored in reverse, with a one being the highest and seven being the lowest.

### Using CLASS® in Head Start

The Improving Head Start for School Readiness Act of 2007 requires that the OHS monitoring review process include the use of “a valid and reliable research-based observational instrument...that assesses classroom quality...” The Act also states that such an instrument should be used as part of the system for designation renewal (re-competition of grantees). After extensive review of different instruments, leading early childhood experts agreed that the Classroom Assessment Scoring System (CLASS Pre-K®) was the instrument that best met the statutory requirements. Since the fall of 2011, CLASS Pre-K® has been used during monitoring reviews in center-based Head Start programs.



CLASS Observations 2021-2022

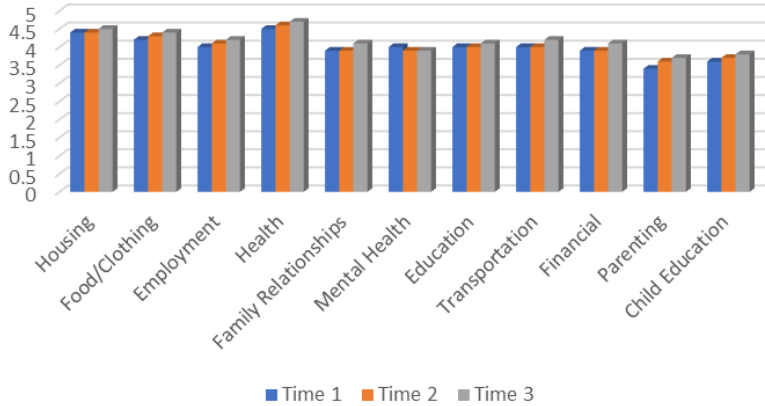


# Family Needs FY 2021-2022

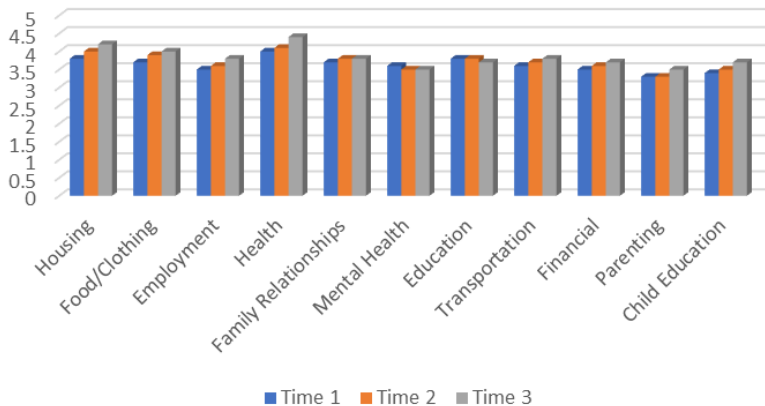
Families were assessed 3 times per year in the following areas using the rating scale below:

1.0- In Crisis    2.0- Vulnerable    3.0- Stable    4.0- Self Sufficient    5.0- Thriving

Head Start 2021-22



Early Head Start 2021-22



According to the data presented, we are seeing gains in almost all areas, particularly Health and Parenting. We consider our focus on Health and School readiness to be contributing factors for the growth in those areas. Parenting also had a significant increase. Feedback from parents and Family Service Workers tells us that the Parenting classes that were offered were beneficial to those that participated. Our largest concern is Mental Health for both Early Head Start and Head Start. We've recognized that this is a community wide issue and will be exploring this in our Community Needs Assessment.

Submitted by: Jennifer LaBonte, PFCE Manager

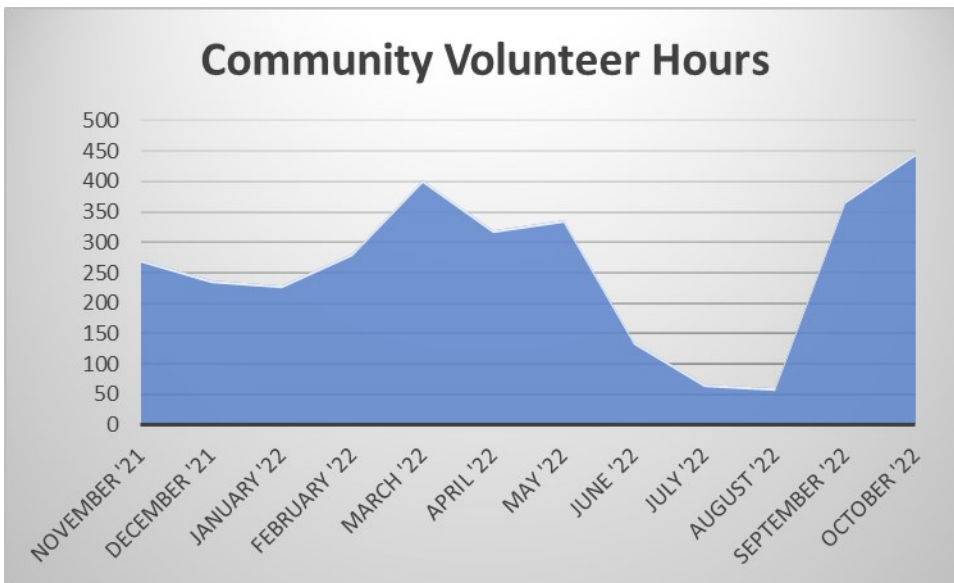


**Strengthening Families®**

Shifting the focus *from* risks and deficits to strengths and resiliency.

## Parent, Family, Community Engagement FY 21

### Community Volunteer Hours



### Community Volunteer Hours

November '21	271.5
December '21	237
January '22	228
February '22	280.5
March '22	402
April '22	320.5
May '22	335.5
June '22	135
July '22	65.5
August '22	61
September '22	367.5
October '22	446.5

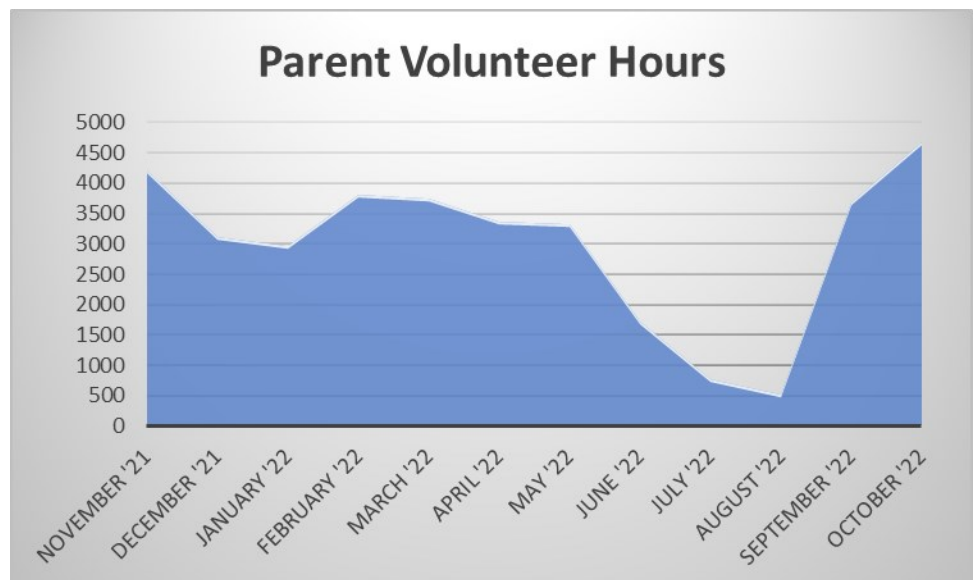


### Parent Volunteer Hours

November '21	4202.5
December '21	3106.5
January '22	2966
February '22	3811
March '22	3740.5
April '22	3366
May '22	3314.5
June '22	1718
July '22	770.5
August '22	510
September '22	3675.5
October '22	4677



### Parent Volunteer Hours



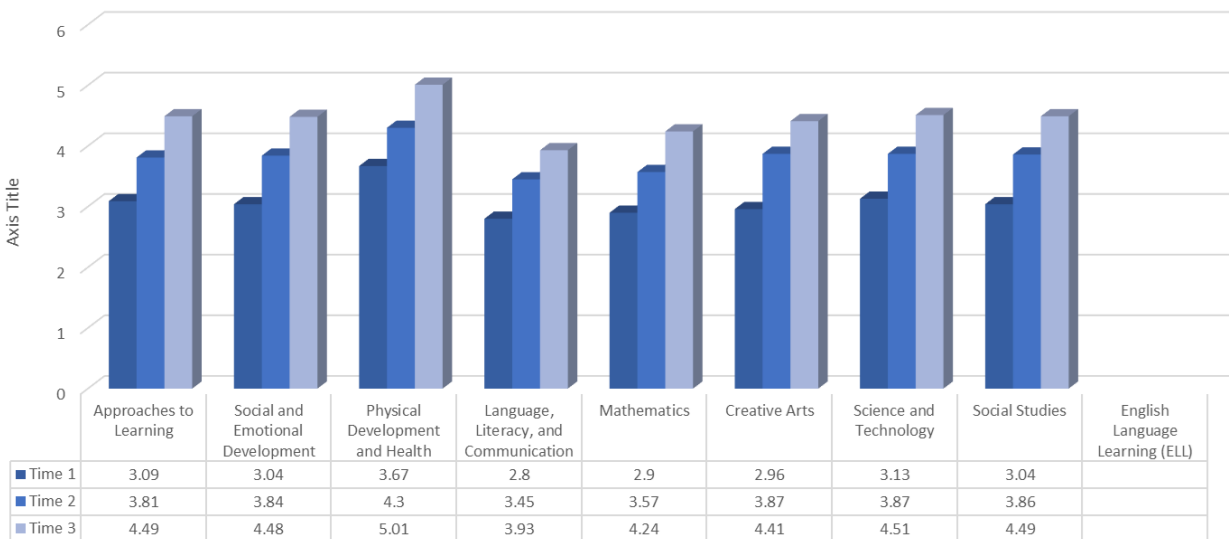
Chippewa-Luce-Mackinac Community Action Agency  
Early Childhood Programs Annual Report FY 2022

## Efforts to Prepare Children for Kindergarten

In order to assess children's progress towards school readiness, our program uses High/Scope COR Advantage. COR Advantage assesses early childhood development from infancy through kindergarten in eight content areas: Approaches to Learning; Social and Emotional Development; Physical Development and Health; Language, Literacy, and Communication; Mathematics; Creative Arts; Science and Technology; and Social Studies. Anecdotal observations are collected in each area and notes are scored. Data is collected in three periods– Baseline (Time 1), Mid Year (Time 2), and Year End (Time 3). Early Head Start has an additional Mid Year Collection

### 2021-2022 Progress Towards Meeting School Readiness Goals

Head Start 2021-2022



Early Head Start 2021-2022





## Community Connections

After having to seclude ourselves for the past 2 years, we were excited to reconnect with our community.



At the beginning of the program year we survey families to see if their workplace allows field trips. Throughout the year we do our best to incorporate this feedback into the lesson plans.



Classrooms were able to allow outdoor visitors and take the children on outdoor field trips. Having these experiences allow the children to connect real life to pretend play in the classroom.



Having strong community collaborations are known to increase family outcomes. By connecting families with community resources they are more likely to make progress and complete family goals.







The Chippewa-Luce-Mackinac Community Action Human Resource Authority, Inc. is a non-profit, non-stock corporation organized in 1965. It is one of many similar organizations that were established under federal legislation to bring together community resources with public and private support to help low income citizens.

The Board of Directors of the Agency has 15 members with representation from Chippewa, Luce and Mackinac counties. It is a policy making body that establishes the rules governing the organization. The board sets priorities and gives final approval for all program proposals; it authorizes major expenditures and oversees the quality of the programs and the extent of participation by the communities served.

Community Action programs are funded from various sources. In addition to federal, state and local grants, donations from corporations, foundations, millage and individuals are part of the financial support for services. The current annual budget is approximately 11.6 million dollars spread over 56 different programs.

CLMCAA collaborates and partners with various federal, state and local organizations for contracts, funding and services. Some examples are: units of government, school districts, health agencies, hospitals, universities, housing commissions, long term care facilities, social service agencies, tribal governments, tribal enterprises, law enforcement, transportation agencies and employment agencies.

CLMCAA programs include:

#### Senior Citizens Programs and Services

- Title III-C Senior Nutrition Congregate Meals
- Meals-On-Wheels
- Senior Citizens Supportive Services
- Medical Supplies Loan Closet
- Personal Care Service
- Homemaker Aide
- Respite Care
- Adult Day Care Services
- Kinship Care
- CSFP-Commodity Supplemental Food Program

#### Housing Assets Management / Affordable Housing Programs

- Avery Square Senior Apartments
- St. Ignace Senior Housing
- West Bridge PBV/ Permanent Supportive Housing
- Emergency Shelter Program & Referrals
- MSHDA Housing Choice Voucher (Wait List)
- Supportive Services for Veterans Families (SSVF)
- Consolidated Rapid Rehousing
- Emergency Solutions Grant (ESG/CV) – Rapid ReHousing/Homeless Prevention including ESG CV
- Emergency Food Shelter Program/FEMA
- Housing Case Management (minimal)

- CSBG CARES
- Housing Stabilization Support

#### Weatherization

- Energy Efficiency Program
- Walk 4 Warmth
- LIHWAP

#### Transportation Services

- Sault Ste. Marie Dial-A-Ride
- Mackinac County Transportation
- Rides to Wellness

#### Food Programs

- Temporary Emergency Food Assistance Program (TEFAP)

#### Early Childhood Programs

- Early Head Start
- Head Start
- Great Start Readiness Program